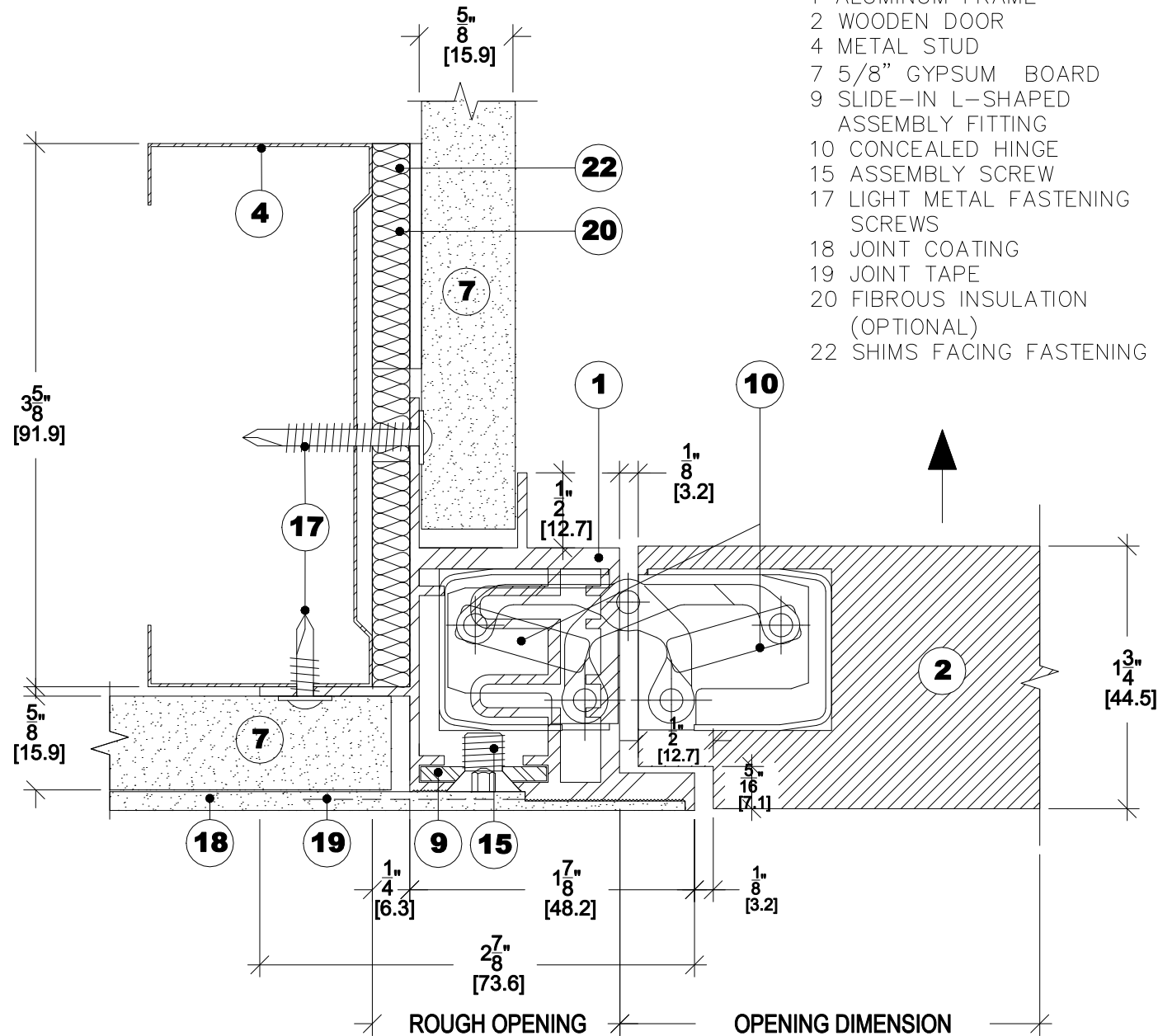


LEGEND

- 1 ALUMINUM FRAME
- 2 WOODEN DOOR
- 4 METAL STUD
- 7 5/8" GYPSUM BOARD
- 9 SLIDE-IN L-SHAPED ASSEMBLY FITTING
- 10 CONCEALED HINGE
- 15 ASSEMBLY SCREW
- 17 LIGHT METAL FASTENING SCREWS
- 18 JOINT COATING
- 19 JOINT TAPE
- 20 FIBROUS INSULATION (OPTIONAL)
- 22 SHIMS FACING FASTENING SCREWS



1 JAMB (HINGE SIDE)
ACTUAL DIMENSIONS



PRODUCT

INTEGRA SYSTEM

SERIES

7000

MODEL

INT7000-IS
10,087,674

DESCRIPTION

LIGHT METAL FRAME
FOR SINGLE DOOR
WITH INWARD SWING

DATE

2019-03-05

SCALE

ACTUAL DIMENSIONS

FILE NAME

DORR_INT7000-IS-EN