

PRODUCT

INTEGRA SYSTEM

SERIES

1000

MODEL

INT1000-OS
10,087,674

DESCRIPTION

LIGHT METAL FRAME
FOR SINGLE DOOR
WITH OUTWARD SWING

DATE

2019-03-05

SCALE

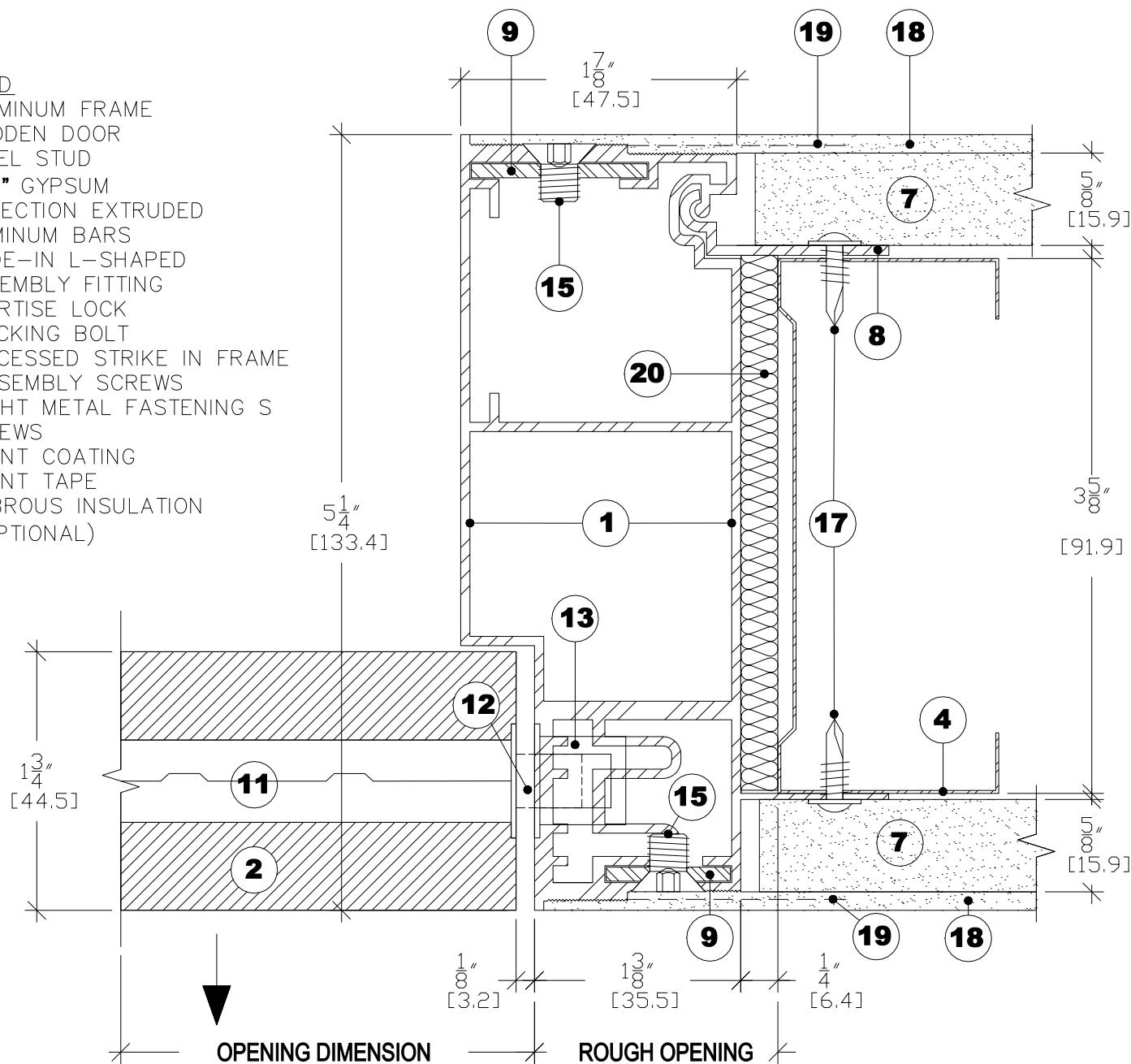
ACTUAL
DIMENSIONS

FILE NAME

DORR_INT1000-OS-EN

LEGEND

- 1 ALUMINUM FRAME
- 2 WOODEN DOOR
- 4 STEEL STUD
- 7 5/8" GYPSUM
- 8 L-SECTION EXTRUDED ALUMINUM BARS
- 9 SLIDE-IN L-SHAPED ASSEMBLY FITTING
- 11 MORTISE LOCK
- 12 LOCKING BOLT
- 13 RECESSED STRIKE IN FRAME
- 15 ASSEMBLY SCREWS
- 17 LIGHT METAL FASTENING SCREWS
- 18 JOINT COATING
- 19 JOINT TAPE
- 20 FIBROUS INSULATION (OPTIONAL)



3 JAMB (LATCH SIDE)
ACTUAL DIMENSIONS