

**PRODUCT**

INTEGRA SYSTEM

**SERIES**

1000

**MODEL**

INT1000-IS

10,087,674

**DESCRIPTION**

WOOD FRAME  
FOR SINGLE DOOR  
WITH INWARD SWING

**DATE**

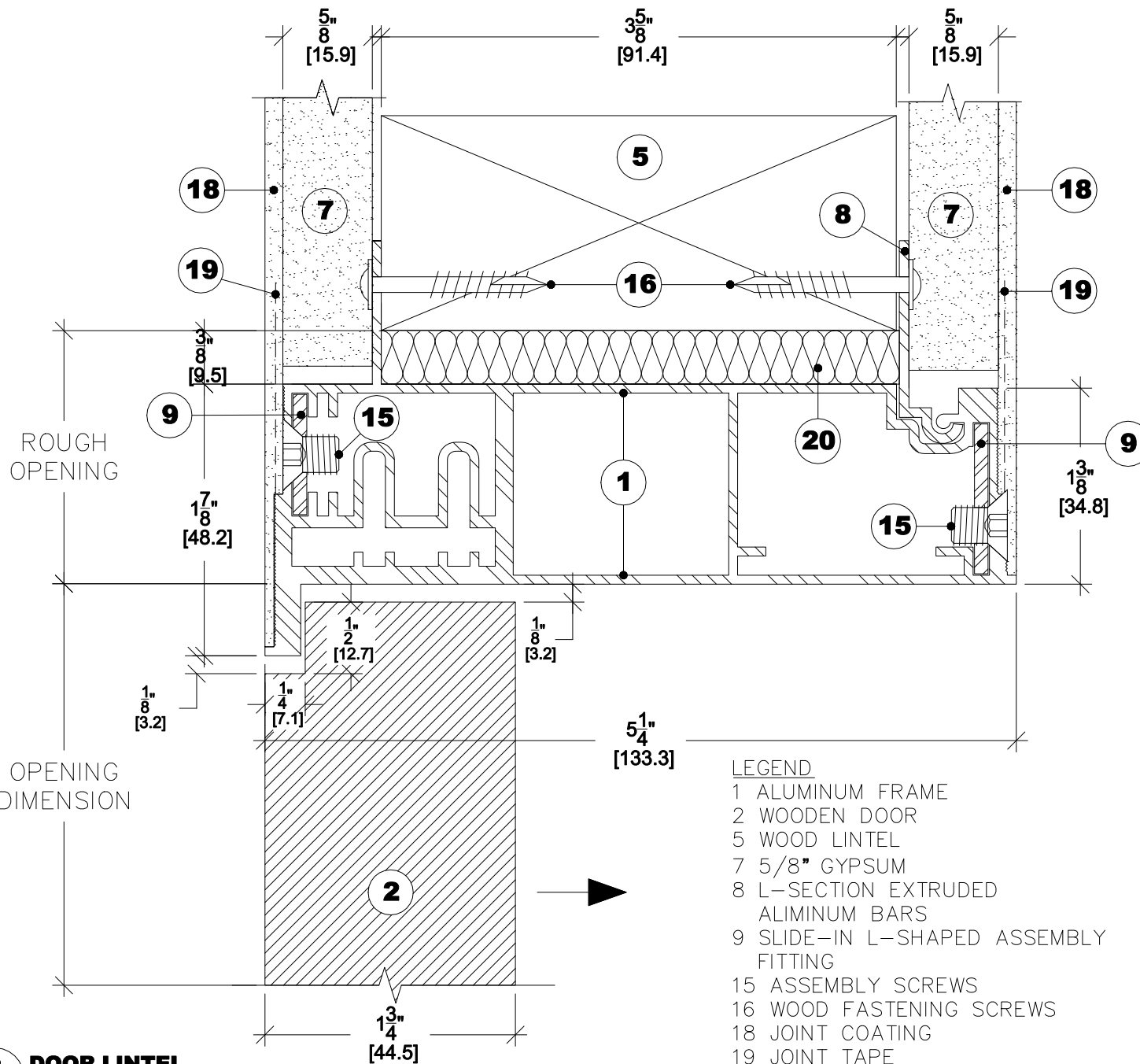
2019-03-05

**SCALE**

ACTUAL  
DIMENSIONS

**FILE NAME**

DORR\_INT1000-IS-EN



**LEGEND**

- 1 ALUMINUM FRAME
- 2 WOODEN DOOR
- 5 WOOD LINTEL
- 7 5/8" GYPSUM
- 8 L-SECTION EXTRUDED ALUMINUM BARS
- 9 SLIDE-IN L-SHAPED ASSEMBLY FITTING
- 15 ASSEMBLY SCREWS
- 16 WOOD FASTENING SCREWS
- 18 JOINT COATING
- 19 JOINT TAPE
- 20 FIBROUS INSULATION (OPTIONAL)

**2 DOOR LINTEL**  
ACTUAL DIMENSIONS